



## EZ Pads Assembly and Installation

***IMPORTANT! - Please read entire instructions before assembly.***

Follow these easy instructions to properly assemble and install your EZ Pads.

### Tools Needed for Installation:

- Shovel
- Level
- 2x4 to assist in leveling dirt sand or gravel.
- #2 Phillips head screwdriver or cordless drill and bit.



## What You Will Receive

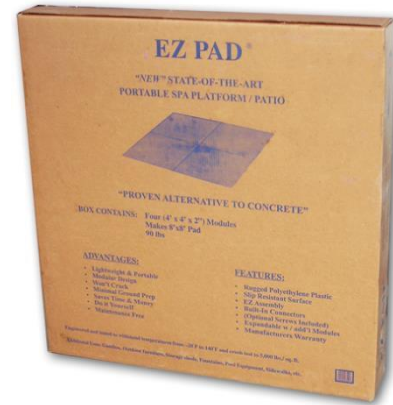
### 4x8, One Box Contains:

(56 lbs.)

(2) 48" x 48" x 2" Modules

(4) Black EZ Pad connectors

(16) #3 Phillips Pan head size 14, 1-inch screws



### 8x8, One Box Contains:

(112 lbs.)

(4) 48" x 48" x 2" Modules

(8) Black EZ Pad connectors

(16) #3 Phillips Pan head size 14, 1-inch screws



### 8x12, Two Boxes:

(112 lbs., 56 lbs.)

(6) 48" x 48" x 2" Modules

(14) Black EZ Pad connectors

(32) #3 Phillips Pan head size 14, 1-inch screws



### **8x16, Three Boxes:**

(112 lbs., 112 lbs., 2 lbs.)

(8) 48" x 48" x 2" Modules

(20) Black EZ Pad connectors

(48) #3 Phillips Pan head size 14, 1-inch screws



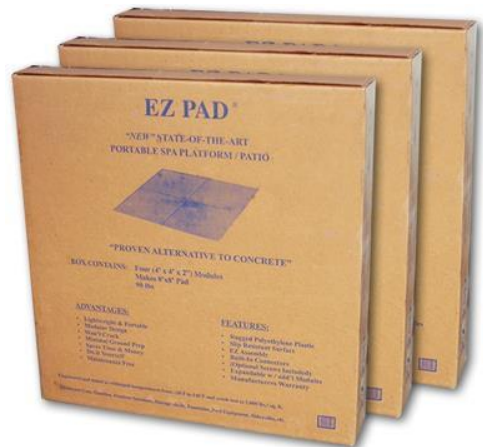
### **8x20, Three Boxes:**

(112 lbs., 112 lbs., 58 lbs.)

(10) 48" x 48" x 2" Modules

(20) Black EZ Pad connectors

(48) #3 Phillips Pan head size 14, 1-inch screws



### **12x12, Three Boxes:**

(49"x49"x9", 98 lbs., 49"x49"x9", 98 lbs., 49"x49"x5", 28 lbs.)

(9) 48" x 48" x 2" Modules

(24) Black EZ Pad connectors

(48) #3 Phillips size 14, 1-inch screws



**12x16, Four Boxes:**

(49"x49"x9", 98 lbs., 49"x49"x9", 98 lbs., 49"x49"x5", 98 lbs., 4x8x14, 2 lbs.)

(12) 48" x 48" x 2" Modules

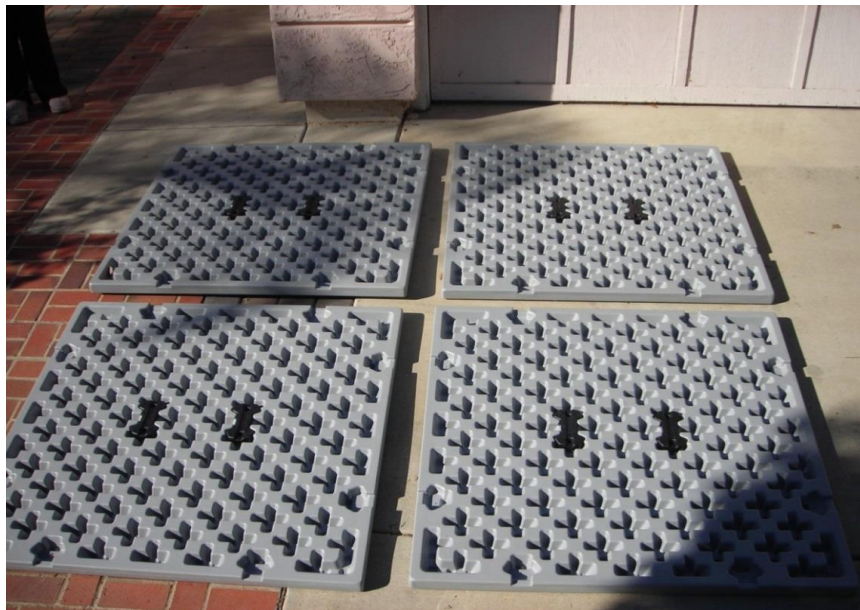
(34) Black EZ Pad connectors\*

(60) #3 Phillips size 14, 1-inch screws



**Use these simple recommendations to ensure the successful installation of your EZ Pad!**

Arrange modules bottom side up to make an 8' x 8' square.

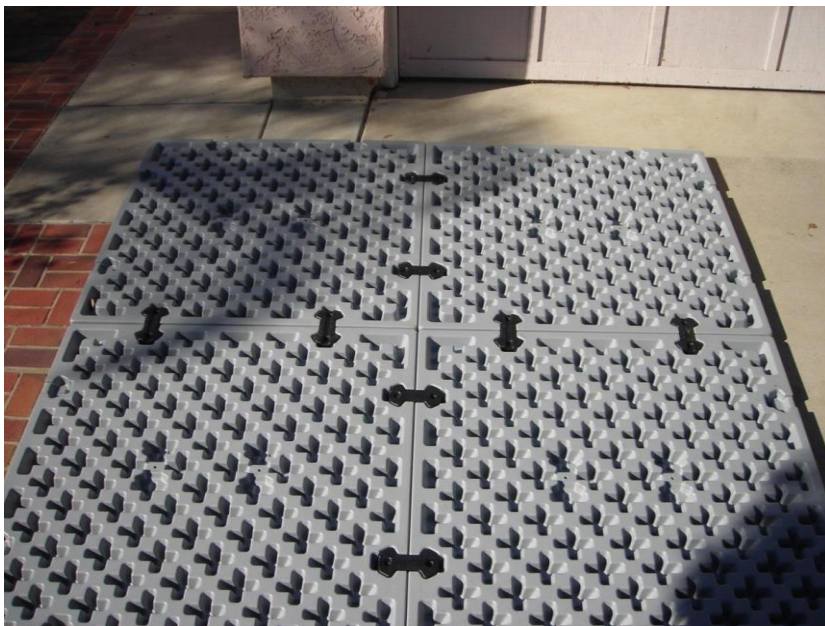




Remove EZ Pad connectors from EZ Pad modules.



Locate the adjoining pockets on each module and insert connectors into adjoining pockets. Apply downward pressure to lock them in place.



Drive two screws into each of eight EZ Pad connectors.



Turn the EZ Pad over with at least 2 or more individuals. Place one person on each of 2 sides. Lift together standing it on end and slowly flip it over.



Move EZ Pad to spa installation location



### **EZ Pad Surface Preparation**

It's really easy to install your EZ Pads. EZ Pads can be put on any surface that is flat and level, and if your location is not perfectly flat and level it's easy to fix using 3/8" crushed rock or pea gravel, and possibly a 4" x 4" x 8' pressure treated board and a couple of stakes.

3/8" crushed rock is the preferred fill material because it is less likely than sand to shift, and allows for drainage.



EZ Pads can be placed on grass, dirt, sand or gravel. For best results, prepare a flat, level base. Begin by checking and preparing, if needed, the installation location surface.

## Check the surface

The EZ Pad modules can be placed on grass, dirt, sand or gravel.

Use an 8 foot 2" x 4" and a bubble level to check that your installation location is flat and level. Be sure to check both directions, 90 degrees from each other.

### If you have a flat surface

If it is flat and level, you can put your EZ Pad right on top of grass, dirt, or other landscape material.

### If there are slight depressions

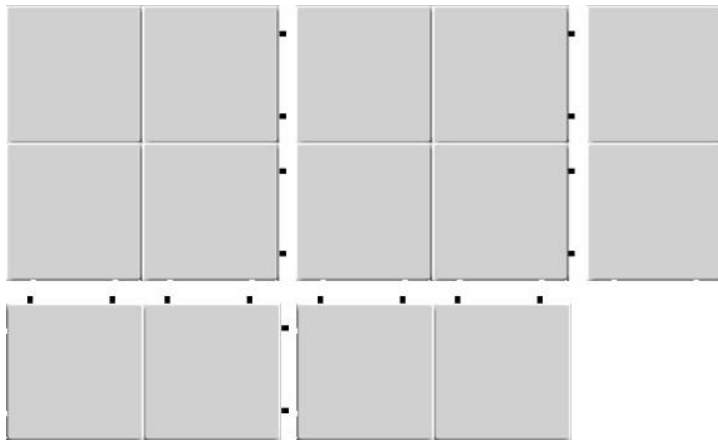
If there are small depressions in the surface, use some 3/8" crushed rock to fill in the depressions.

### Make the EZ Pad level with ground or patio

You can also dig down 2" to make the EZ Pad level with the ground. This is a good idea if you want your hot tub or spa to be the same level as a patio or other ground surface.

## Swim Spas and Larger Sizes

To easily assemble larger areas, assemble groups of panels no larger than 4 panels or 8' x 8'. Screw in additional connectors on the side that you wish to connect to the additional area.



Once the sets of panels are assembled, turn over and place the group without connectors on top of the attached connectors and press down to snap together. It is a good idea to have two people when turning over the assemblies.



## Surface Preparation for Swim Spas

For swim spas, or any spa over 12 feet in length, we recommend 4 inches of compactable landscaping material (like decomposed granite) tamped down to ensure reliable support for the higher loads or pavers with 2" of sand, or 3+ inches of concrete.

For spas 12 feet and under, please use standard surface preparation.



## Conduit installation instructions

Using a 1" hole saw, drill from the bottom of the EZ Pad in the center of one of the recesses to simplify conduit insertion.

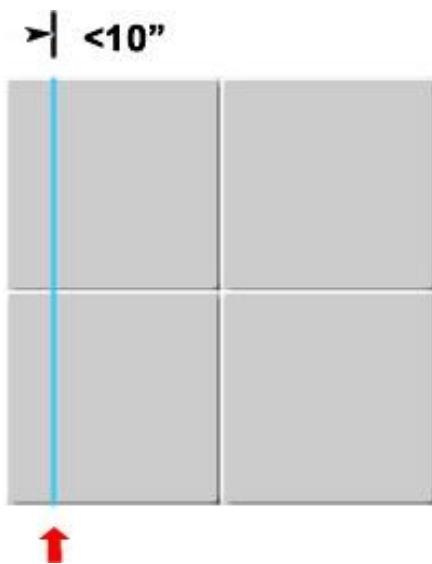


## Cutting EZ Pads

It is OK to cut one edge of an EZ Pad assembly. We recommend using a small hand-held circular saw with a fine blade. Set the depth of the blade to just over 2". To mark your cut, you can use a chalk line or straight edge. Avoid cutting more than 10" from the edge. Cutting beyond 10" means losing a connector allowing the pads to scissor when moved.



EZ Pads can also be notched to fit under decks. Remember not to cut beyond 10" from the edge



## Using EZ Pads as a Foundation

EZ Pads can be used for as a base for garden sheds if they are of the free standing variety. Garden sheds that are wooden kits and require the use of concrete anchors cannot be built on EZ Pads as concrete anchors cannot be used with EZ Pads.

EZ Pads are not suitable for attaching gazebos. Gazebos need to be attached to hot tubs or put on separate footings.



If you have any questions, feel free to give us a call at 866-**397-2370**, M-F, 9 a.m. to 4 p.m. Pacific time